

Five naturally occurring flavonoid compounds of the most promising anti-proliferative natural living substances

Memory Care Professional

Journal of the Society of Gerontology & Geriatrics

SCNM Now

The Official Newsletter of Southern College of Health Sciences

The Herb Alpert Supports Medical Research

Herb Alpert, a world-renowned musician and philanthropist, has donated \$1 million to support medical research at Southern College of Health Sciences. The donation will be used to fund research in the areas of gerontology, neuroscience, and health care delivery. Alpert, who is also a member of the SCNM Board of Trustees, expressed his deep appreciation for the college's commitment to advancing the health and well-being of the community.

Great Minds Go!

SCNM's Graduate School of Health Sciences is proud to announce the completion of its first cohort of graduates. The graduates, who have completed their Master's degrees in Health Administration, Health Services Management, and Health Care Quality Improvement, are well-prepared to lead in the health care industry.

DISCOVER the NATURE OF

THE LIFE OF COB

On Experience

Syllabus

Cancer Centers

SCNM is proud to offer a variety of cancer care services, including diagnostic imaging, chemotherapy, and radiation therapy. Our state-of-the-art facilities and highly trained staff ensure the highest quality of care for our patients.

SCNM
SOUTHERN COLLEGE OF HEALTH SCIENCES

Rejoice

Have You Ever Wanted to Save the World?

At last, there's a real opportunity.

Southern College of Health Sciences is proud to announce the opening of its new Center of Excellence in Health Care Quality Improvement. This center will provide a comprehensive range of services to help health care organizations improve their quality of care and patient safety.

ATSU Annual Report 2009

Special Care Dentistry

SCNM is proud to offer a variety of dental services, including general dentistry, orthodontics, and oral surgery. Our state-of-the-art facilities and highly trained staff ensure the highest quality of care for our patients.

SCNM
SOUTHERN COLLEGE OF HEALTH SCIENCES

OUR MEMBERS

- A to Z Therapies
- Arizona Advanced Therapy
- Arizona Speech Pathology
- Desert Valley Pediatric Therapy
- Essential Therapy Services
- Huppert Pediatric Therapy
- Rising Star Pediatric Therapy
- Sunny Days Pediatric Therapy
- Sunshine Speech Therapy
- Stepping Stones Pediatric Therapy
- Tender Touch Occupation Therapy
- Wheels on the Bus



CONTACT US



602-547-1111



99 E. Virginia Ave.
Suite 200
Phoenix, AZ, 85004



www.azcooperativetherapies.com



www.azcooperativetherapies.com



MISSION AND VISION

ACT's mission is that through collaboration with our early childhood provider agencies, we uphold exceptional standards of practice and business ethics for family-centered services in Arizona. Our vision is to set the standard for success in the early childhood community.

"When I had my first-born he wasn't being vocal, would throw tantrums for everything, and cry relentlessly. I did some research and by the grace of God found help! A member from Huppert Pediatric Therapy reached out and because of her we found ways to help with my son's sensory system and speech. She provided great guidance. I am now able to understand my son's behaviors and speech. My son has developed so much!"



WHAT WE DO

Members of Arizona Cooperative Therapies (ACT) offer occupational, physical, speech language therapies, developmental special instruction, and service coordination that enhance children's individual capabilities and foster their independence.

- OCCUPATIONAL THERAPY
- PHYSICAL THERAPY
- SPEECH THERAPY
- SPECIAL INSTRUCTION
- SERVICE COORDINATION



WHY CHOOSE US?

ACT was formed in 2006 in direct response to Arizona Early Intervention Program's (AzEIP) call for interagency collaboration for the provision of team-based early intervention services.

Our diverse group of experienced business owners have already proven their devotion to providing quality services to birth to three families and consumers.

"Sarah and Essential Therapy Solutions came into our lives when my son was two and a half years old. Miles did not speak and we were very concerned about what that meant and what could be done for him. After a thorough and insightful evaluation, Sarah began making regular visits to our home and providing him with speech therapy through a variety of thoughtful techniques. The impact of her work was life changing. Miles began to talk."

**We have every tool
you need to succeed
and reclaim your life.**

Counseling
A.R.I.S.E. helps individuals, teens, and families using one-on-one counseling or group counseling. Your initial assessment will help us determine the best course of action. The many women and men we see have many options.

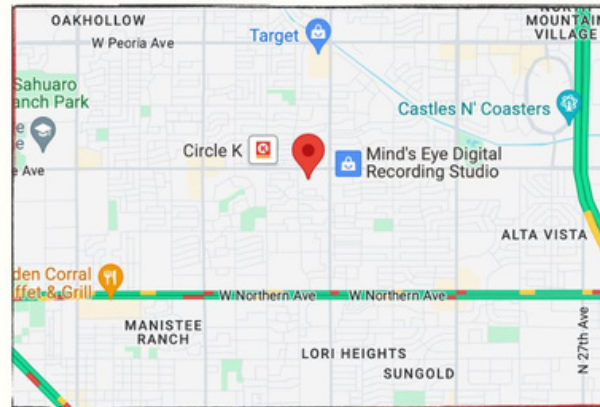
Intensive Outpatient Programs
Following critical care for mental health or substance use disorder, its typical a client be required to go through an intensive outpatient program (IOP). We offer early day and late day programs for the program to fit around a client's work or life schedule.

Individualized Care
Every client is unique and responds to some treatments better than others. Therapists will recommend dialectical behavioral therapy, trauma-focused cognitive behavioral therapy, EMDR (eye movement desensitization reprocessing), hypnotherapy, or even life coaching.

Call us today.

623-755-9690

OUR LOCATION



A.R.I.S.E: COMMUNITY SOLUTIONS

4425 W Olive Ave., Suite 301
Glendale, AZ. 85302



**Mental Health
Counseling**

**Rise Up and
Start a New
Life Now!**

www.arisecommunitysolutions.com

About Us

ARISE Community Solutions believes that all people, regardless of their addictions and situations in life, can regain control of their mental health and/or addictions, heal from past hurts and trauma with the right approach and support. Sunrise or sunset, it's time. You are Able, Resilient, Intelligent, Successful, and Effective in your community, so **ARISE!**

”

"The staff at ARISE Community Solutions really care for the clients and are very helpful. It's good to be here. It has benefited me so much!"

— current patient



Accepted Insurance

- American Indian Health Plan
- Banner University Family Plan
- Mercy Care
- United Healthcare Community
- Health Choice
- Aetna and Banner/Aetna
- Blue Cross Blue Shield
- CHAMPVA
- Cigna
- Medicare
- Optum/UHC
- Oscar
- Triwest VACC
- Humana
- Magellan

What We Treat

- ADHD
- Anxiety
- Bipolar
- Dual Diagnosis
(Excluding SMI)
- Emotional Trauma
- Stress Management
- Anger Management
- Behavioral Issues
- Alcohol and Drug Addiction

Why Choose Us?

**Focus on
Quality**

**Partner in
Recovery**

**Safe
Environment**

**Supportive
Peers**



Clinic Hours

Monday - Friday: 8:30 am - 4:30 pm
Clinician's schedule varies.

Group Hours

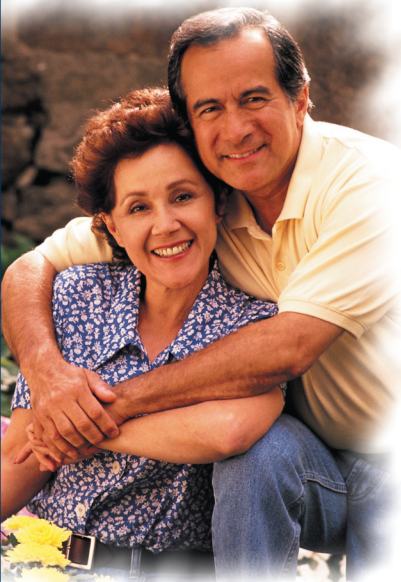
Monday: 9:30 am and at 12:00 noon
Tuesday - Friday: 9:00 am and at 12:00 noon
Subject to change with 15-days notice.

**Start Your
Healing Journey**

**Call
623-755-9690**

High Cholesterol?

Age 40 to 65?



*Join a clinical trial
evaluating nutritional
supplements for high
cholesterol and
receive **free** lab tests
and office visits.*

*Call 480.222.9328 for
more info or e-mail
heart@scnm.edu.*

The Southwest College of Naturopathic Medicine Research Institute
Non-profit research integrating innovation and natural treatments for effective health solutions.

SOUTHWEST COLLEGE OF

SCNM

NATUROPATHIC MEDICINE

(480) 222.9328

www.scnm.edu

Reach beyond tomorrow's health challenges.



Meet that challenge with a rigorous education and the tools you need to get to the root of the problem. **Choose Naturopathic Medicine.**

It will take the best of both worlds to address tomorrow's health challenges.

Naturopathic Physicians (N.D.s) are trained and licensed in the broadest scope of alternative medical therapies. In addition to the basic medical sciences, conventional diagnostics, pharmacology and minor surgery, Naturopathic Medical education includes therapeutic nutrition, botanical medicine, Traditional Chinese Medicine, homeopathy, mind-body medicine, natural childbirth, and naturopathic manipulation.

Make a difference in healthcare and choose Southwest College of Naturopathic Medicine – An accredited professional-level naturopathic medical school.

SOUTHWEST COLLEGE OF

SCNM

NATUROPATHIC MEDICINE

**2140 E. Broadway Road
Tempe, Arizona 85282
1.888.882.7266
www.scnm.edu**

A growing body of research identifies environmental toxins as a leading cause of chronic and degenerative diseases.

BRAIN CANCER
Increased rates of childhood brain cancer in the U.S. related to chemical exposure.

AUTISM
Exponential increases in rates of Autism and ADD/ADHD in the U.S. related to heavy-metal toxicities.

PREMATURE SEXUAL DEVELOPMENT
Plasticizers implicated in premature sexual development in young girls in Puerto Rico.

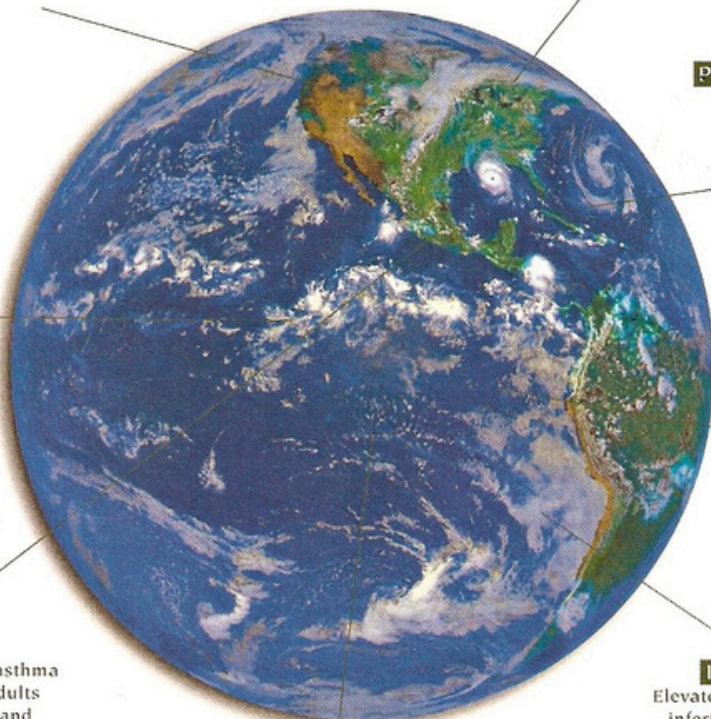
BIRTH DEFECTS
Fungicides producing hormone-like chemicals, known as endocrine disruptors, reduce sperm values in humans worldwide and cause birth abnormalities and cancers.

MENTAL RETARDATION
Reduced intelligence in children born to mothers with levels of PCBs found in their blood (linked to fish intake).

ASTHMA
Nationwide increases in asthma for both children and adults linked to air pollution and solvent exposures.

INFERTILITY
Elevated rates of female infertility associated with solvent and pesticide exposure.

PARKINSON'S DISEASE
Increased rates of Parkinsonism linked to pesticide and herbicide use.





**CONSCIOUS
CAPITALISM®**
ARIZONA CHAPTER

AZ CONSCIOUS CAPITALISM **COLLEGIATE CHALLENGE**

JOIN US FOR THIS EXCITING FREE EVENT!

College student teams will be pitching startup proposals to top business leaders for over \$40,000 in prizes.

**WEDNESDAY
APRIL 11
4-6PM**

GCU ARENA
3300 W CAMELBACK RD
PHOENIX, AZ 85017



TO RSVP VISIT:

CONSCIOUSCAPITALISMAZ.COM/EVENTS

COME EARLY TO HEAR CANYON ANGELS PRESENTATION
ANGEL INVESTING:
A WAY TO GIVE BACK, HAVE FUN
AND MAKE A GREAT RETURN!
2PM BUILDING 57
CONTACT: TIMOTHY.KELLEY@GCU.EDU

AWARD SPONSORS

AZ CONSCIOUS CAPITALISM | CANYON ANGELS | HOOL COURY LAW
PHOENIX BBB | GOODMAN | HUSTLE PHX | STARTUP AZ | GALVANIZE
CO+HOOTS | SEED SPOT | Y SCOUTS | WEBPT | MAC6 | APS | SRP

COMMUNITY PARTNERS

ARIZONA COMMERCE AUTHORITY | MOONSHOT AT NACET
AZ FOUNDERS FUND | AZ TECH INVESTORS | INVEST
SOUTHWEST #YESPHX | COPLEX | IGNITE | IDP

Have You Ever Wanted To
Save the World?

At Last There's a Real Opportunity.

Save Lives.

Save Our Planet.

Save the Date.